



**HI, I'M SLICK THE BANANA SLUG!  
WELCOME TO SEQUOIA PARK**

**SEQUOIA PARK QUEST TRAIL INFORMATION:**

**Start:** At Sequoia Park Zoo Kiosk:  
3414 W St, Eureka, CA 95503

**Contact:** Sequoia Park Zoo - (707) 441-4263  
www.eurekaparksandrecreation.com  
Kiosk Open 10am-5pm Mon-Sun  
(Closed Mondays during winter)

**Total Length:** ~ 45 minutes

**Difficulty:** Moderate, mostly unpaved, slight up hill with stairs, frequent rest stops.

**Driving Directions from U.S. 101:**

**From the South:** When the freeway ends as you enter Eureka, stay on Broadway Street. Turn right on West Harris Street and go up the hill. Continue down West Harris Street and make a right onto W Street. The Zoo will be on your right. Park on the side of the road and approach the Zoo Kiosk on foot.

**From the North:** Turn left onto V Street from when you first enter Eureka. Stay on V Street as it turns into West Ave, and continue onto S Street. Turn left onto Harris Street. and make right onto W Street. The Zoo will be on your right. Park on side of the road and approach the Zoo Kiosk on foot.



**HOW TO QUEST:**

You are holding a treasure map! Follow the movement clues (*italicized*) between the stops (numbered) and discover the natural and cultural treasures of this forest.

At your final destination you will find your Quest Clue. This is the “key” to your prize (see the “Now that you’ve finished your Quest” section for your next step)!

Have fun, be safe, and stay on marked trails during your adventure.



**NOW THAT YOU’VE FINISHED YOUR QUEST:**  
Go to the Zoo Kiosk to display your Quest Clue and claim your prize by signing the logbook! If they are closed, log on to the Redwood EdVentures website (below) and we’ll mail your prize to you.

**WHERE WILL YOUR NEXT QUEST TAKE YOU?**

The journey you’ve just completed is one of many Redwood EdVentures Quests. Find Quest locations and download free copies at [www.redwood-edventures.org](http://www.redwood-edventures.org). Teachers, students, and families can also explore hundreds of outdoor places and educational opportunities on the beautiful Redwood Coast. Find out why **nature is closer than you think!**



*THINGS I SAW ALONG THE WAY...*

Developed in collaboration with the Environmental Education and Interpretation Practicum Class, Humboldt State University, 2015.  
Revised October 2015

**REDWOOD  
EDVENTURES  
QUEST**

**SEQUOIA PARK**



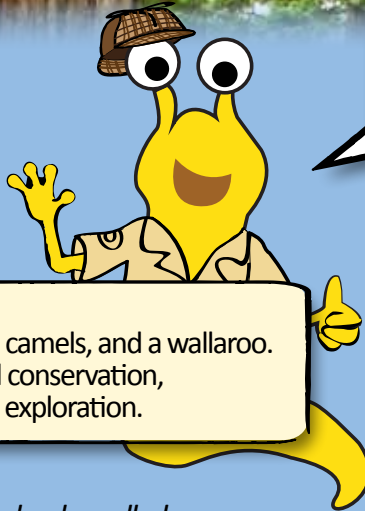
**DISCOVER THE MYSTERY!**





## DISCOVER THE MYSTERY OF SEQUOIA PARK'S HISTORY!

From the Zoo Kiosk head back down the zoo steps and look left, stop at the rock on the left with the plaque and read the plaque.



1 Welcome to California's oldest zoo, Which once housed a chimpanzee, camels, and a wallaroo. Now focused on wildlife stories and conservation, Check out the zoo after your Quest exploration.

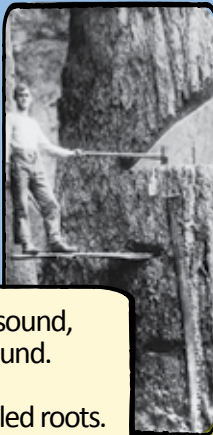


With the plaque to your back, walk down the sidewalk on W street towards Sequoia Park. Make a right at the Sequoia Park sign and walk up to the great arch gate entrance. **Watch Out!** Cars drive on this road.

2 In 1904 Sequoia Park was created, Deciding how to mark the entrance was debated. Look up at this arch that now stands so grand, Donated by Eureka Lumber company's own hand.

Walk into the park and keep left on the road until you reach a crosswalk. Turn right and enter the picnic area. Approach the fence at the back of the picnic area. Walk right along the fence until you spot a set of stairs directly in front of you in the ravine. This is your stop.

Walk your eyes up the stairs and notice the small, rectangle section missing in the stump above. This is a notch that a springboard was once inserted into as you can see in this picture.



3 **TIMBER!** Yells the lumberjack, he makes a great sound, On a springboard he stands to fell logs to the ground. Inserted into trees then stood on with boots, Springboards lifted loggers above the tree's gnarled roots. Loggers in the 1800s created Eureka, a booming town, With funds from logs they sawed to the ground.

Facing the fence turn right and follow the fence into the forest. Walk on this main path, descending several flights of stairs. Follow the trail with the creek to your left. When you reach a chimney you've arrived at your next stop.

4 In the past this was a hidden retreat, One would ride a trolley caught off E street. Abandoned and crumbling and now overgrown, Nestled in redwoods this stone chimney stands alone.

Continue down the main trail. Cross the wooden bridge. Walk up to the fenced pond on your left. Stop here.

5 Look around the pond and you might detect, An invasive pet that has experienced neglect. Little hard-topped turtles with two red specks, The Red-Eared Slider turtle makes this pond a wreck. Dropped off by their owners to make this place their home, Turtles bullied the frogs 'til they could no longer roam.



Turn around. The pond should be behind you. Approach the Rhododendron Glen sign. Stop here.

6 Welcome to this Rhododendron grove, A planted flower treasure trove. These blossom's colors depend on the land, Changing with the soil acidity of the redwood stand.

Walk up the Rhododendron Glen trail to your left. Continue under the overhanging trees. Go up 7 steps and stop when you reach the waterfall.

7 Watch the water pitter patter to the ground, Hidden underground until it surfaces here to be found. This water runs right under Eureka, through it all, Flowing in to feed the park, growing big ferns and trees so tall.



Follow the boardwalk and go up all the stairs. At the top be on the lookout for a tree with the mounds coming out of its trunk on your right! This is your stop.

8 Look up and gaze upon this mounded burl, That makes the tree trunk gnarl and swirl. It's an outward growth that protects these trees, Responding to fungus and fiends and preying disease. Burls are key for tree regeneration, They bring life to the next generation.

Stay on the trail and keep left. Once you meet the road, take it, and go left.

Follow the road until you find the gravel and dirt footpath that curves right as the road curves to the left. Along the way you will pass a driveway and several buildings. Walk along the dirt path until you see a driveway. Turn right up the driveway but not through the gate. Instead, make a left at the fence and follow it into the tree tunnel. This is your stop.

9 Walk beside this fence of Leyland cypress wonder, How did it turn into the tunnel we walk under? The gardener wove these branches as they grew, Making this secret tunnel we now walk through.

At the end of the fence turn right, and approach the wishing well in the center of the garden.

10 Questers and explorers, this exploration ends here, In this Dahlia garden, make a wish most sincere. Now find a bench with a flower engraved You've made it through this Quest! Hooray!

Many people have left their mark  
A legacy of flowers, trees, and Sequoia Park.  
Look for traces on benches you can sit upon  
Where does Chuck Hassett live on?

**WRITE YOUR QUEST CLUE HERE:**